

Horizon

PF-P3200

**Quick, accurate folding performance
for efficient operation.**



High capacity and high productivity...
Folding Speeds up to 240 sheets/min. (A4 - Single Fold)

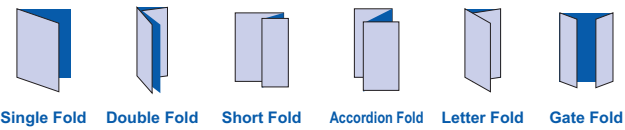


Advanced technology with lots of features for efficient operation

Automatic Setup with Simple Operation

Does not require advanced operator skills for setup. Each section is automatically set by selecting sheet size and fold pattern using the operation panel. Six standard fold patterns are available at the press of a button.

Folding Patterns



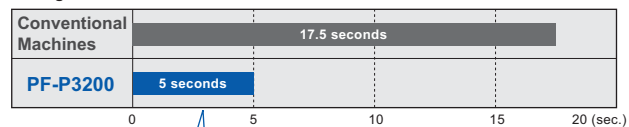
High-speed Folding - 240 sheets/min.

Even high volume direct mail jobs or urgent jobs can be handled with high productivity at maximum production speeds of 240 sheets per minute (A4 / 8.5" x 11" - single fold).

Short Make-ready

Setup time is reduced dramatically and accuracy of the setup is improved with an accurate stepper motor.

Changeover from A3 (11" x 17") - Short Fold to A4 (8.5" x 11") - Accordion Fold



Time for changeover: reduced by 1/3 compared to models in this range.

Selective Speed Mode for Comfortable Operation

Step 1 (Silent Mode)

Top level sound deadening design ensures quiet operation and does not disturb others in the area. Sound pressure is reduced up to 70% compared to the high-speed mode.

Step 2 (Standard Mode)

Unique drive control system is used for quieter operation at higher production speeds (140 sheets per minute with A4 / 8.5" x 11" - single fold).

Step 3 (High-Speed Mode)

A wide range of sheets and fold patterns can be folded at higher production speeds (175 sheets per minute with A4 / 8.5" x 11" - single fold).

Step 4 (Ultrahigh-Speed Mode)

Maximum folding speed is 240 sheets per minute (A4 / 8.5" x 11" - single fold). Suitable to fold thicker sheets. (Maximum 157 gsm)

High Capacity Feeding

The PF-P3200 is equipped with a high capacity feed table (550 sheets of 64 gsm can be loaded) to minimize sheet loading. The bin up/down motor enables fine bin control for consistent feeding.



Simple Operation Panel

Equipped with a user friendly operation panel that makes understanding operating procedures very simple.



Extension Panel and Memory Functions

Additional special sheet sizes and fold patterns can be set using the ten keys in the extension panel. Up to 8 jobs can be memorized for instant recall.



Extension Panel

Neatly Stacked Delivery Conveyor

Folded sheets are neatly stacked on the delivery conveyor for easy job handling.



Simple Maintenance

Cleaning or replacement of the folding rollers is quick and easy to perform, without any special tools.



Remove the delivery roller.

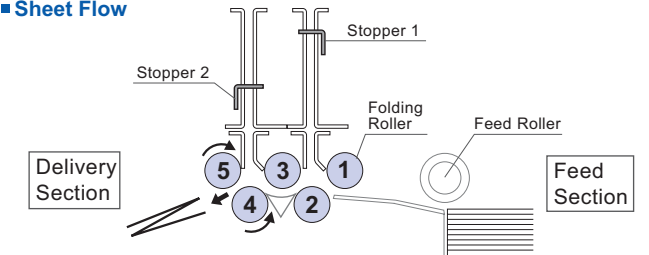


Lay the buckle section down and remove the rollers for cleaning or replacement.

Stable Sheet Transportation

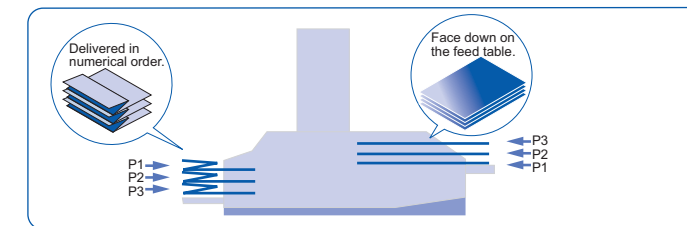
The PF-P3200 is equipped with five folding rollers for reliable sheet transportation and consistent folding quality.

Sheet Flow



Helpful for Folding of Drawings

Drawings can be placed face down on the feed table, and the folded drawings will be delivered in numerical order.

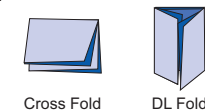


Reduces Electrostatic Issues

The standard mode (intermittent feeding mode) helps to reduce electrostatic issues that can be found in digitally printed sheets or during the winter.

Cross Fold / DL Fold

Complicated fold patterns such as DL fold and 8-page fold are available. Cross folds can be performed easily using the roller for cross folding (standard accessory).



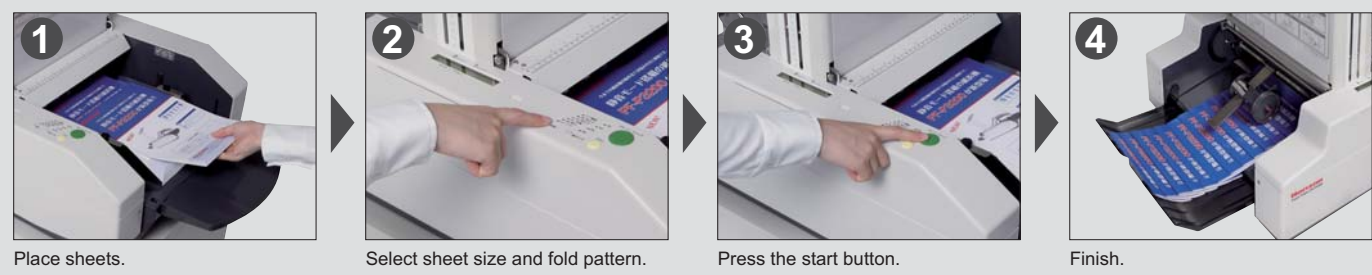
Cross Fold DL Fold



Roller for Cross Fold

Simple Operation

Simply place sheets on the table, then select sheet size and desired fold pattern.



Place sheets.

Select sheet size and fold pattern.

Press the start button.

Finish.

PF-P3200 Major Specifications

Sheet Size	Max. 311(W) x 432(L) mm (12.24" x 17.00") Min. 65(W) x 90(L) mm (2.56" x 3.55")
Matrix Size	A3, A4, B4, B5 (11" x 17", 8.5" x 11", 8.5" x 14", 5.5" x 8.5")
Sheet Weight Range	Normal Paper 53 to 157 gsm
Maximum Pile Height	Max. 55 mm (2.16") (Normal Paper 64 gsm / 550 sheets)
Fold Patterns	Single Fold, Double Fold, Short Fold, Accordion Fold, Letter Fold, Open Gate Fold
Production Speed	Max. 240 sheets/min. (A4/Letter size - Single Fold)
Other Functions	Total Counter (Up to 9,999), Preset Counter, Fold Position Memory Function, Silent Mode, Feed Interval Adjustable
Voltage / Frequency	Single Phase 100 / 115 / 230 V, 50 / 60 Hz
Rated Current	100 V, 50 Hz, 0.9 A / 60 Hz, 1.0 A
	115 V, 50 / 60 Hz, 0.9 A 230 V, 50 / 60 Hz, 0.5 A
Power Consumption	100 / 115 / 230 V, 50 Hz, 90 W / 60 Hz, 100 W
Heat Output	540 kJ (130 kcal)
Motors	50 W x 1
Machine Dimensions	Main Body : 1,000(W) x 517(D) x 623(H) mm (39.4" x 20.4" x 24.6")
	Pedestal with Wheel : 642(W) x 553(D) x 670(H) mm (25.3" x 21.8" x 26.4")
Noise Level	L _A peak : 88.6 dB / L _{Aeq} : 83.1 dB (A3 - 64 gsm - Double Fold - High Speed)
Machine Weight	38 kg (83.8 lb)

Options

■ Pedestal with Wheel (MT-330)



■ Maintenance Kit



- Roller Cleaner (XPF-111) 2 pcs
- Double Feed Stop Plate 4 pcs
- Feed Roller 2 pcs
- Folding Roller 2 pcs

*The machine design and specifications are subject to change without any notice.

Horizon Paper Folder PF-P Series

■ PF-P280 : Single Fold Model



■ PF-P3100 : Semi-automated Model



■ PF-P330 : Air Suction / Fully Automated Model



■ PF-P Series Major Specifications - Comparative Table

	PF-P3200	PF-P280	PF-P3100	PF-P330
Feed Mechanism	Friction	Friction	Friction	Air Rotor
Sheet Size (Width x Length)	Max. 311 x 432 mm (12.24" x 17.00") Min. 65 x 90 mm (2.56" x 3.55")	Max. 302 x 430 mm (11.88" x 17.00") Min. 65 x 90 mm (2.56" x 3.55")	Max. 302 x 430 mm (11.88" x 17.00") Min. 65 x 108 mm (2.56" x 4.26")	Max. 310 x 432 mm (12.20" x 17.00") Min. 125 x 130 mm (4.93" x 5.12")
Sheet Weight Range	Normal Paper 53 to 157 gsm	Normal Paper 53 to 105 gsm	Normal Paper 53 to 127 gsm	Normal Paper 53 to 157 gsm
Maximum Pile Height	Max. 55 mm (2.16")	Max. 21 mm (0.82")	Max. 30 mm (1.18")	Max. 50 mm (1.96")
Production Speed	A4 (8.5" x 11") - Single Fold 240 sheets/min.	A4 (8.5" x 11") - Single Fold 140 sheets/min.	A4 (8.5" x 11") - Single Fold 240 sheets/min.	A4 (8.5" x 11") - Single Fold 240 sheets/min.
Automatic Adjustment	○	×	×	○
Roller Gap Adjustment	2-step Adjustable	Nonadjustable	2-step Adjustable	Nonadjustable



Manufactured by
Taiyo Seiki Co., Ltd.

Distributed by



Standard Finishing Systems, 10 Connector Road, Andover, MA 01810 (877) 404-4460 www.standardfinishing.com

HORIZON INTERNATIONAL, INC.

510 Kuze Ooyabu-cho, Minami-ku, Kyoto, 601-8206, Japan Phone : +81-(0)75-934-6700, Fax : +81-(0)75-934-6708, www.horizon.co.jp